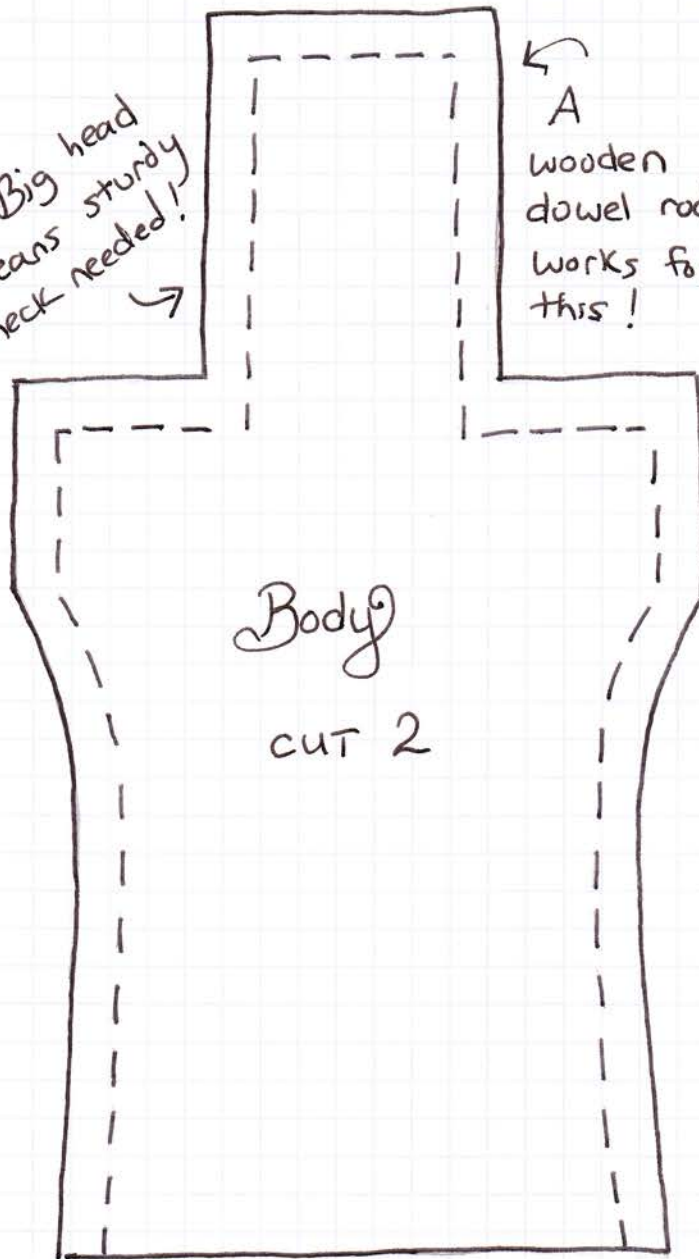


Big head means sturdy neck needed!

A wooden dowel rod works for this!



Body
CUT 2



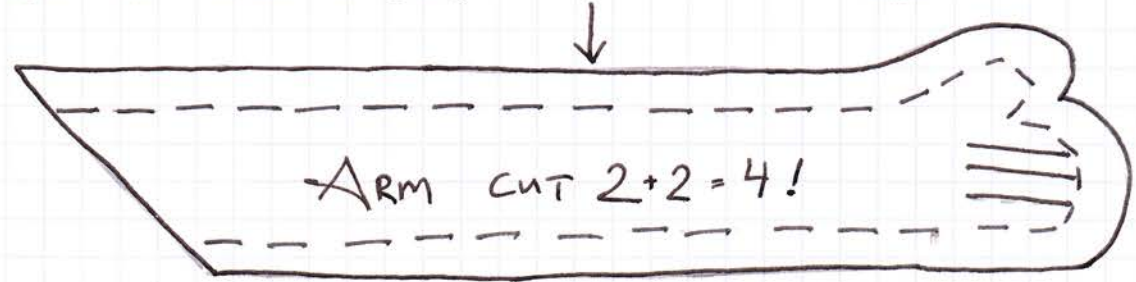
Leg
CUT 2

Fold

it's a pain to turn the legs right side out. Persevere! Use a Knitting needle and a pair of tweezers to help!

Stuff legs half way and then sew a joint in place with flesh coloured thread. Do the same with the arms.

↑ ↑
Leave open, stuff, insert dowel rod and then sew closed.



ARM CUT 2+2=4!

The Body!

↑
arm joint